

# Population developments in the Czech Republic since 1990 and their prospects

**Boris Burcin – Tomáš Kučera**



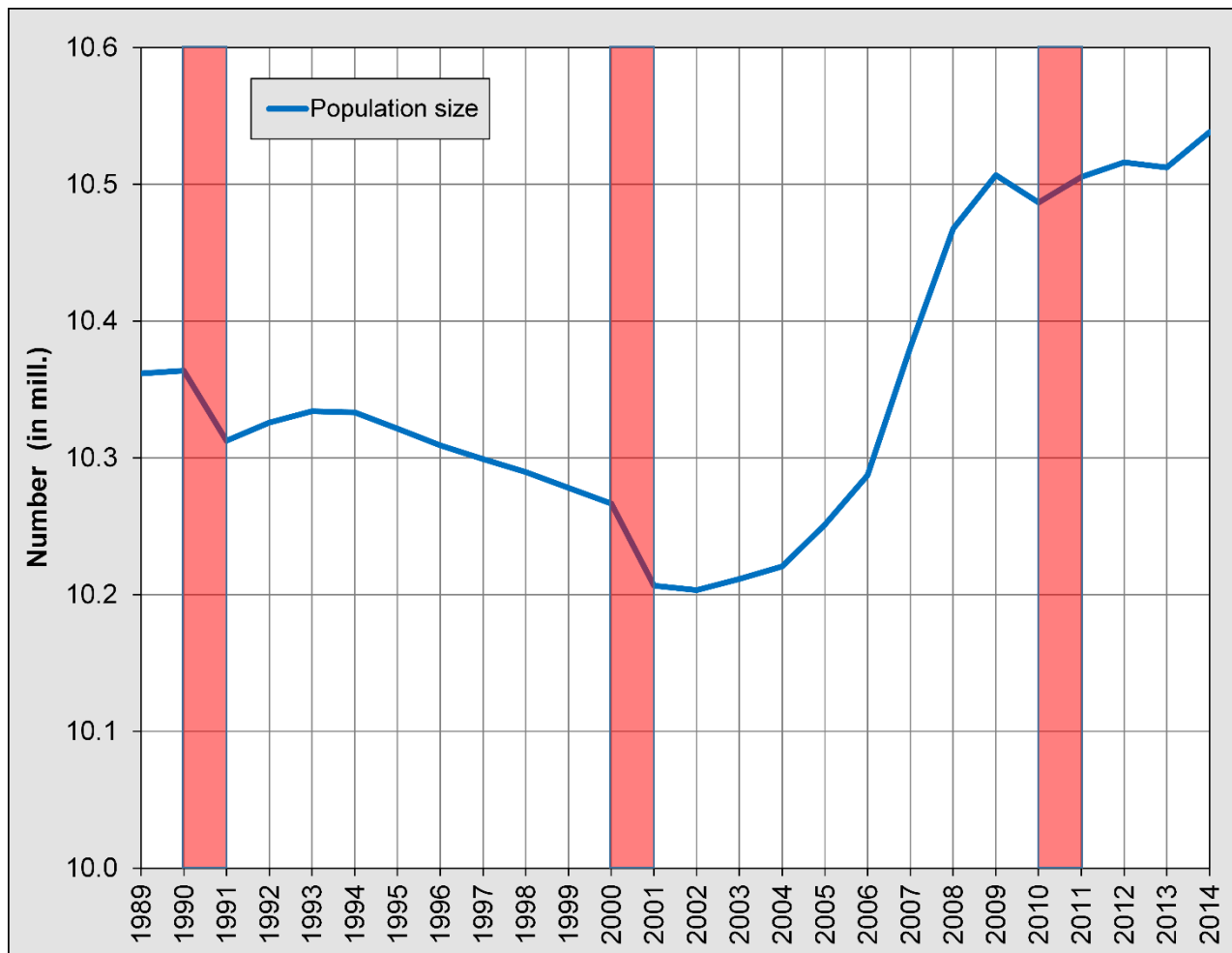
**Charles University in Prague, Faculty of Science**  
Department of Demography and Geodemography

# Population developments in the Czech Republic since 1990 and their prospects

## **Presentation outline:**

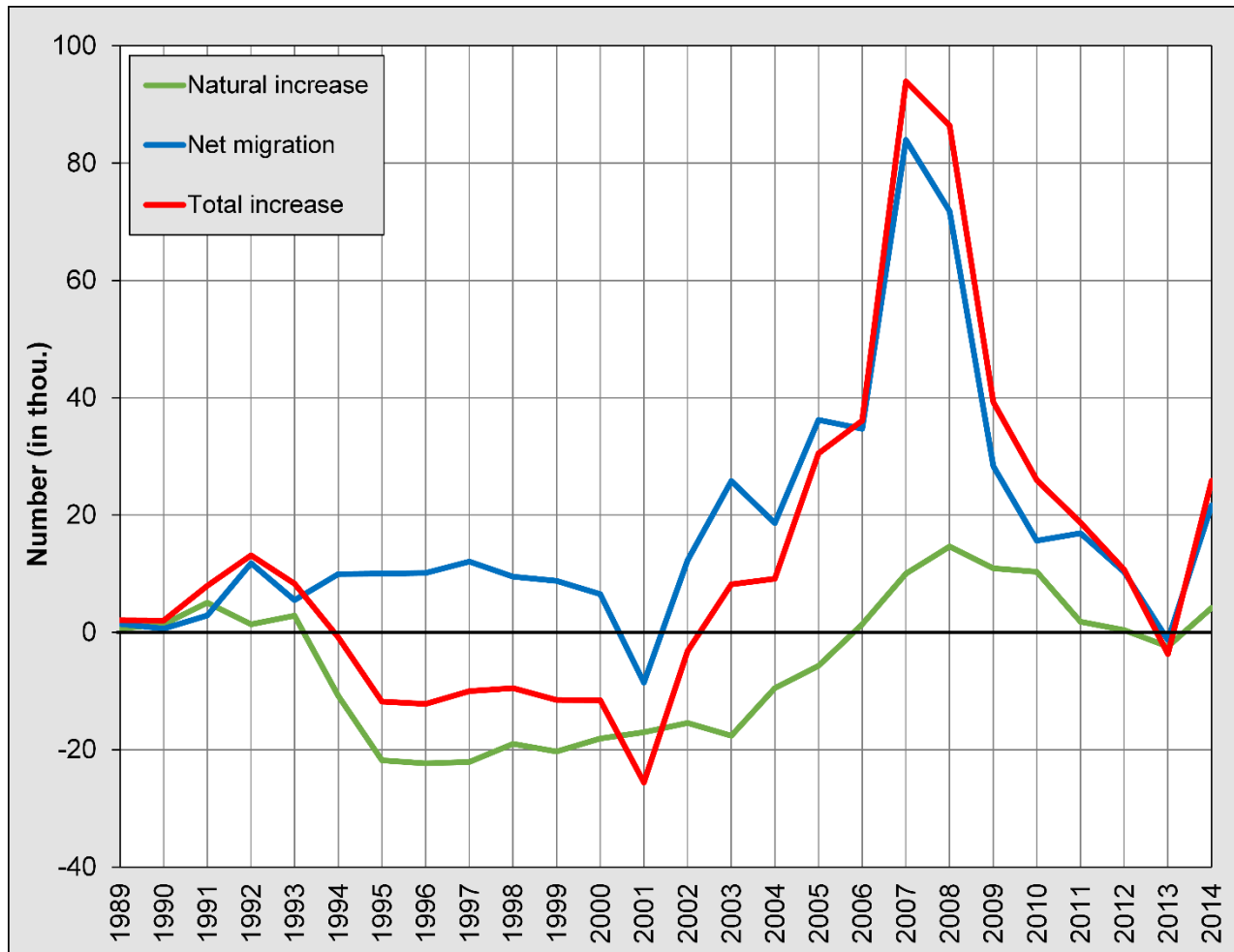
- **Changes of population size**
- **Transformation of sex and age structure**
- **Developments in natural reproduction**
- **Migration on the seesaw**
- **Demographic perspectives**
- **Conclusions**

# Changes of population size



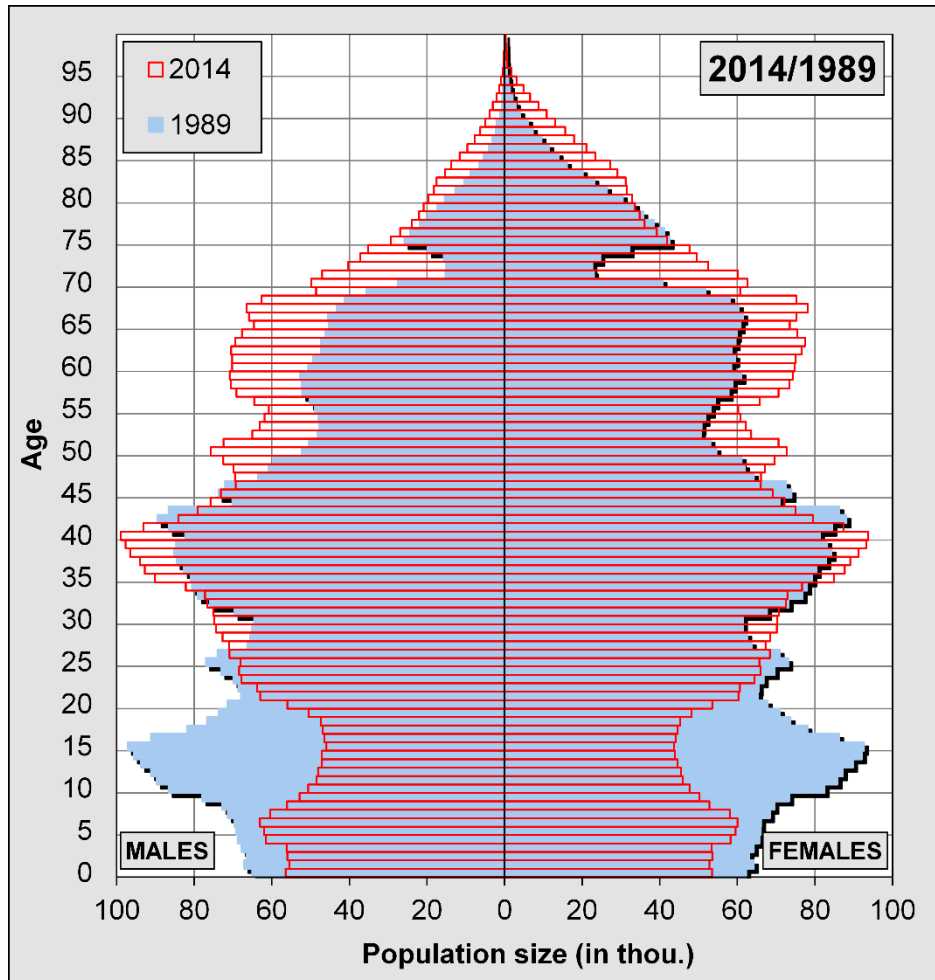
Source of data: Czech Statistical Office

# Transformation of sex and age structure



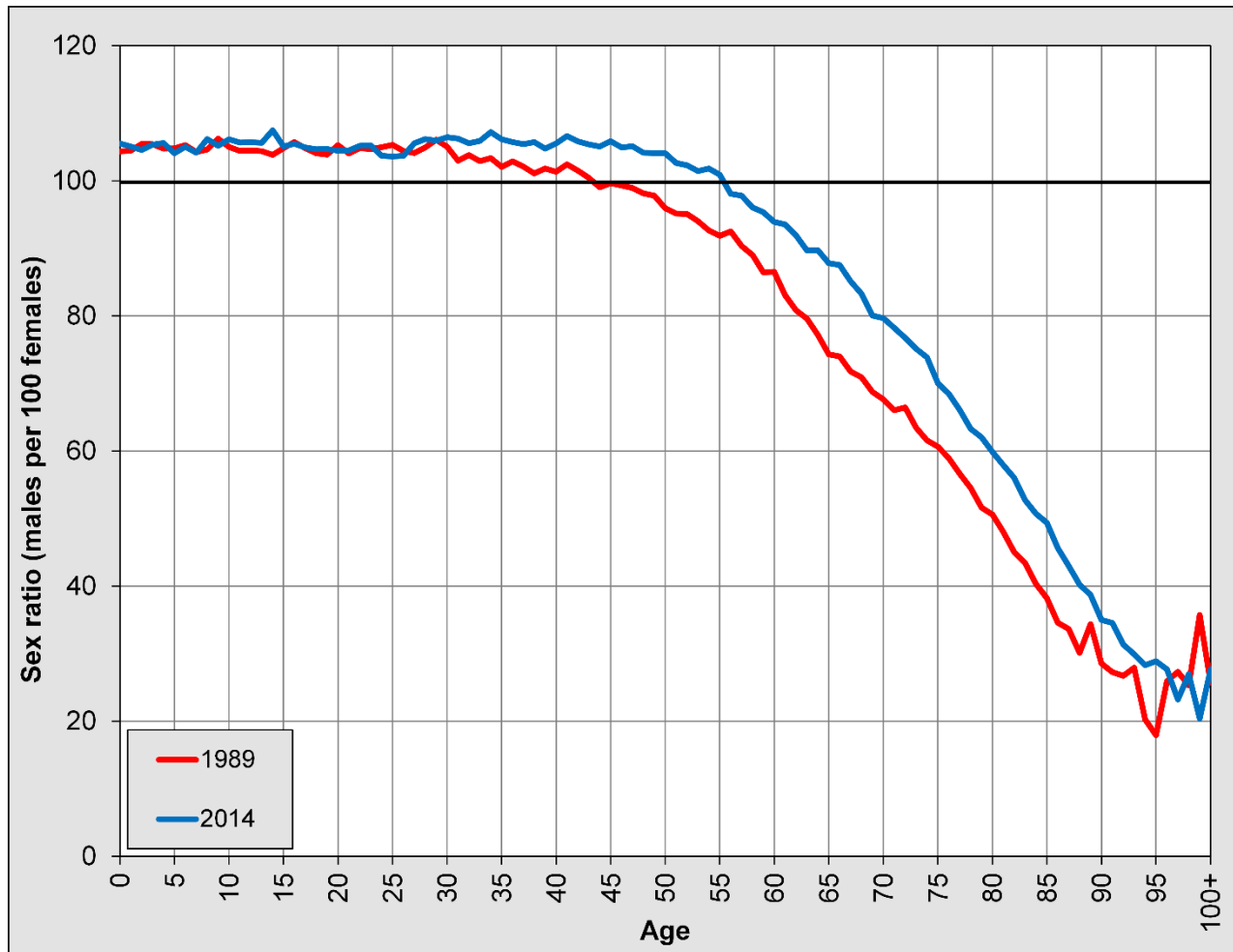
Source of data: Czech Statistical Office

# Transformation of sex and age structure



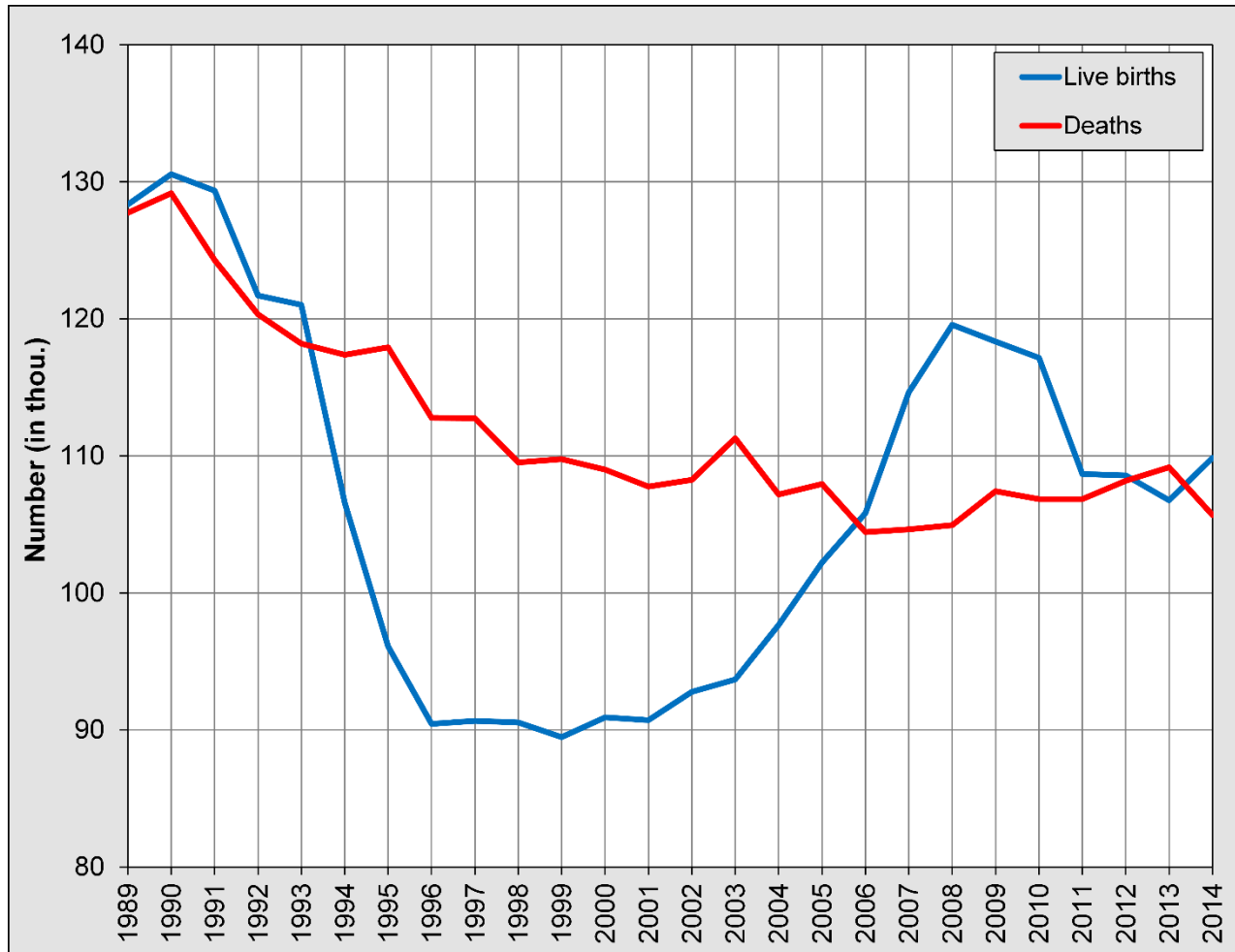
Source of data: Czech Statistical Office

# Transformation of sex and age structure



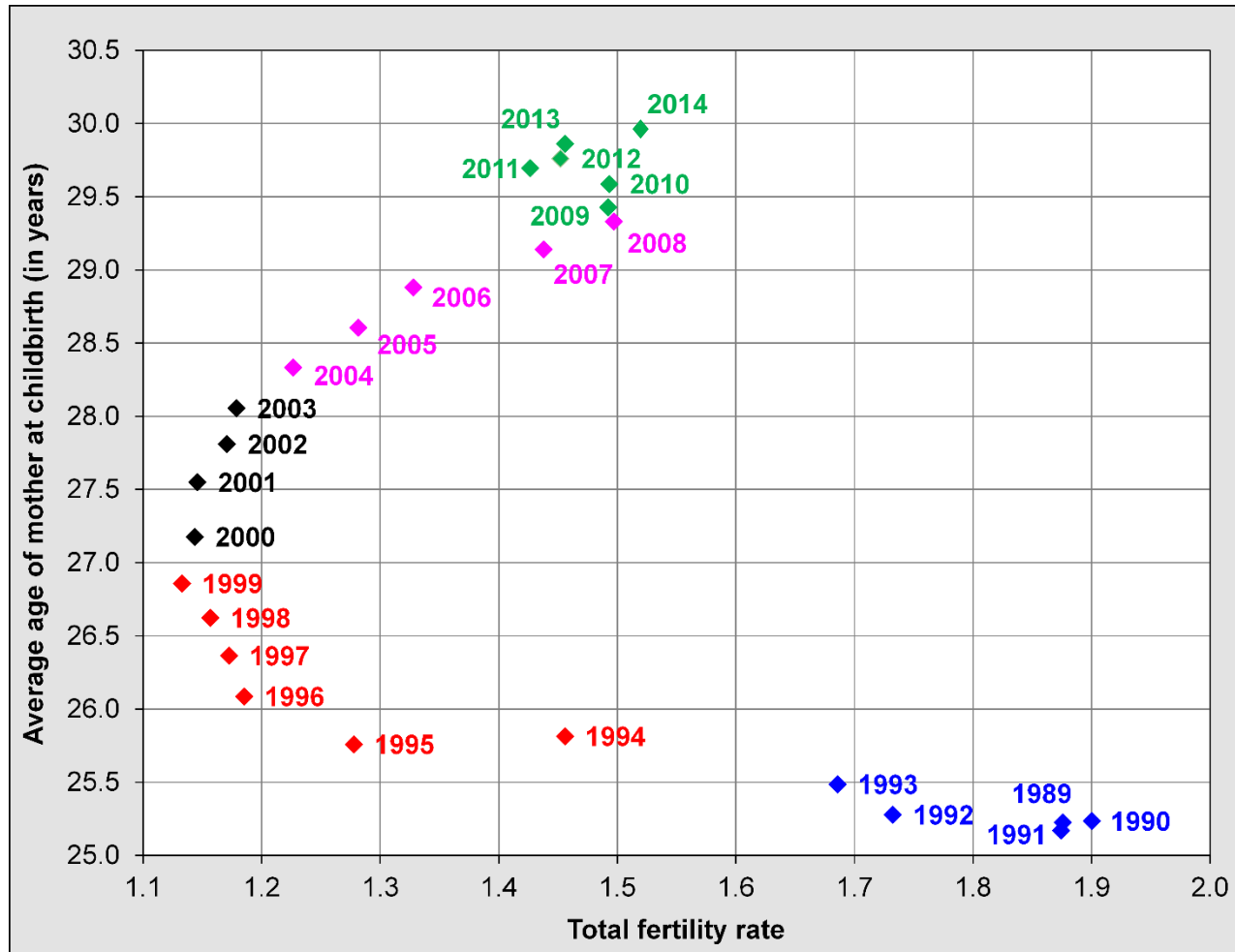
Source of data: Czech Statistical Office and own calculations

# Developments in natural reproduction



Source of data: Czech Statistical Office

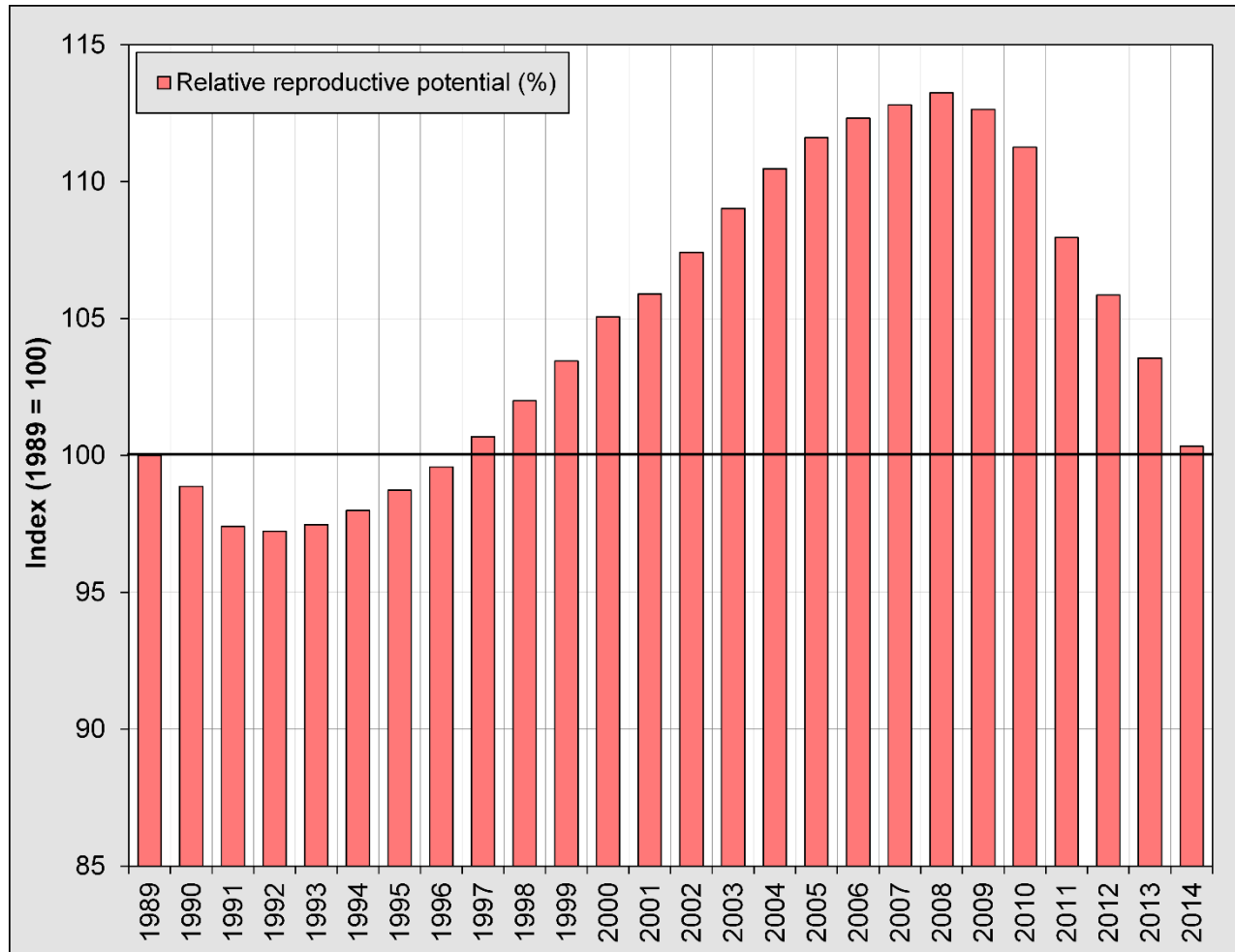
# Profound reduction and ageing of fertility



Source of data: Czech Statistical Office

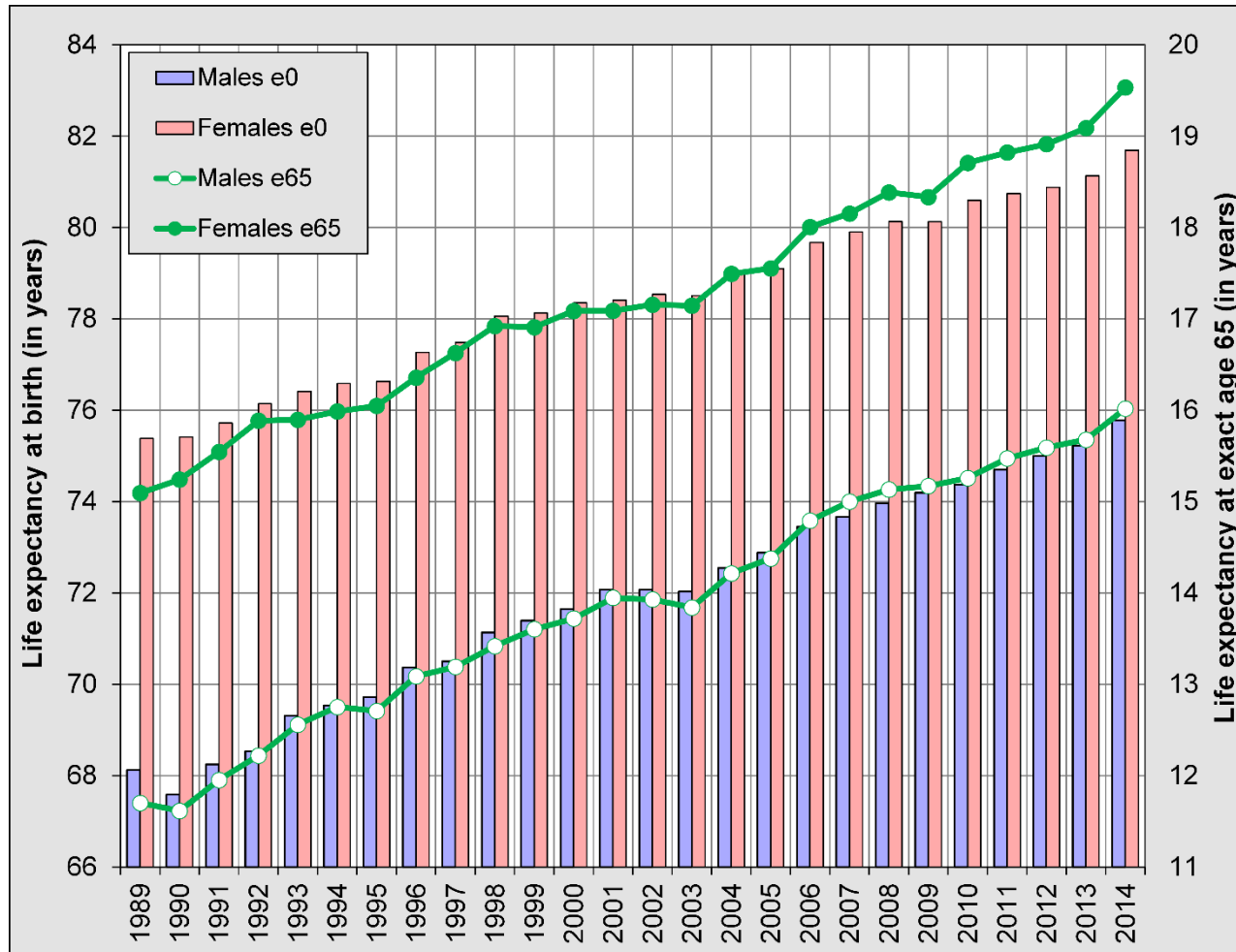


# Changing reproduction potential of females (fertility distribution as in 2014)



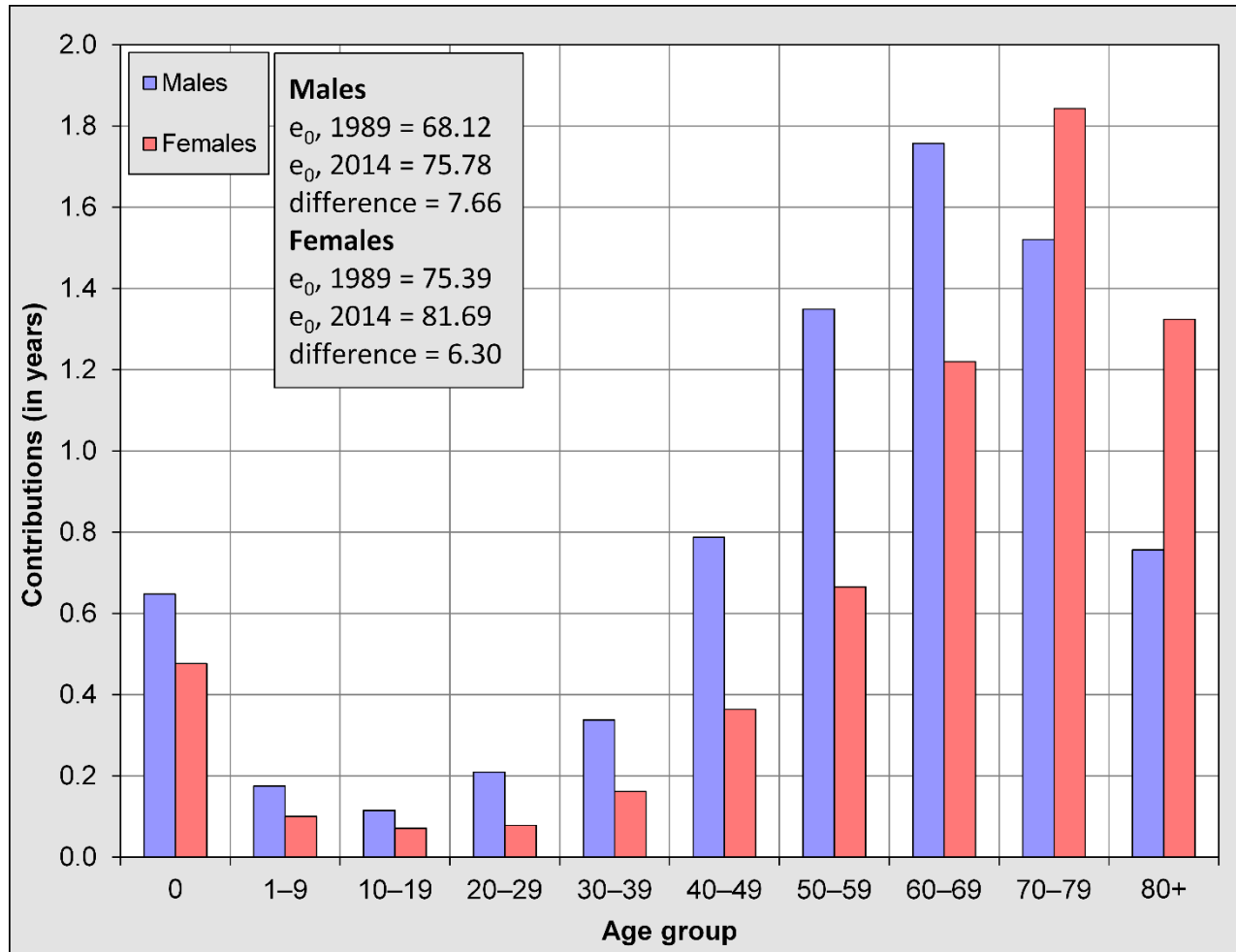
Source of data: Czech Statistical Office and own calculations

# Progress in survivorship



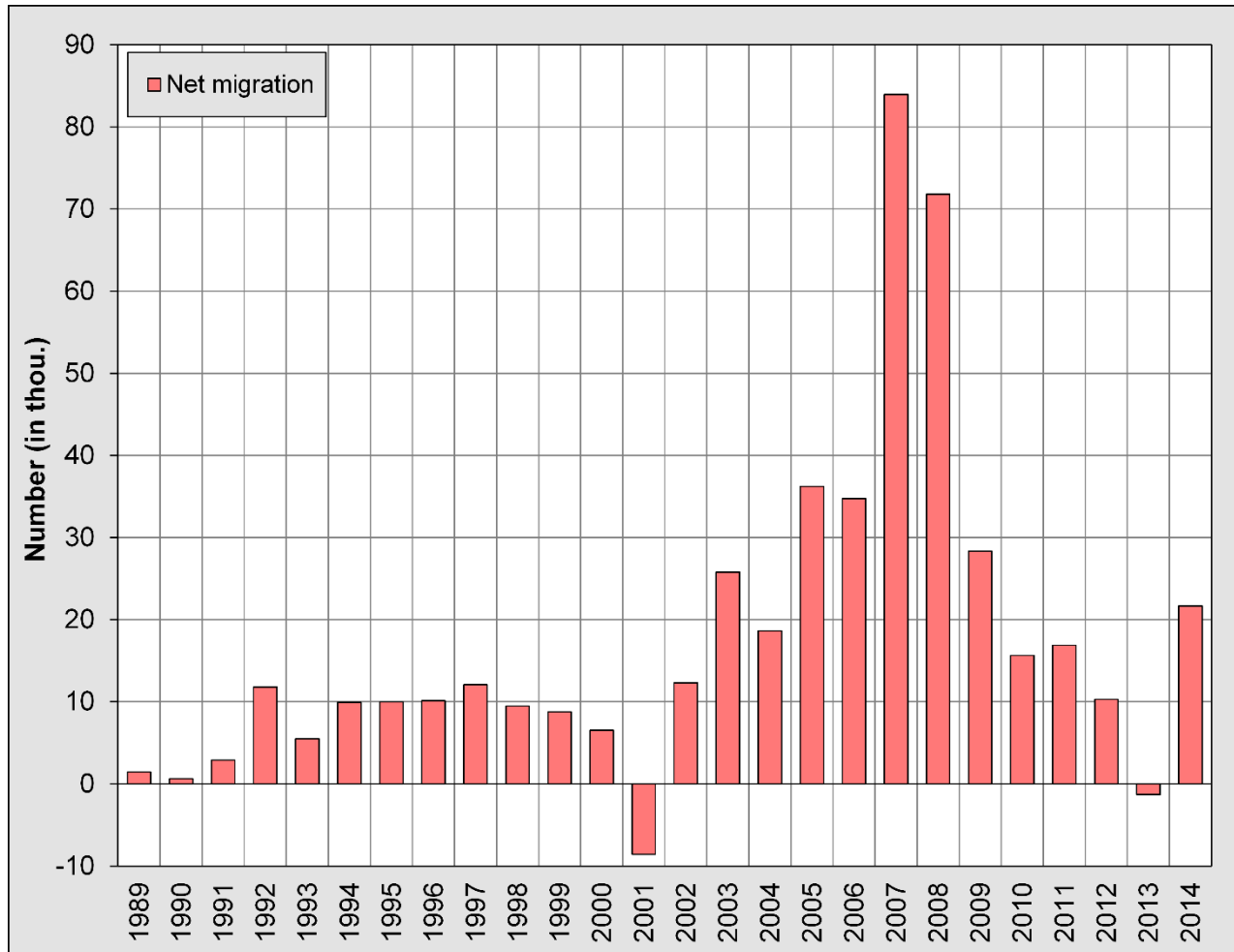
Source of data: Czech Statistical Office and own calculations

# Contributions of age groups to the change of life expectancy at birth between 1989 and 2014



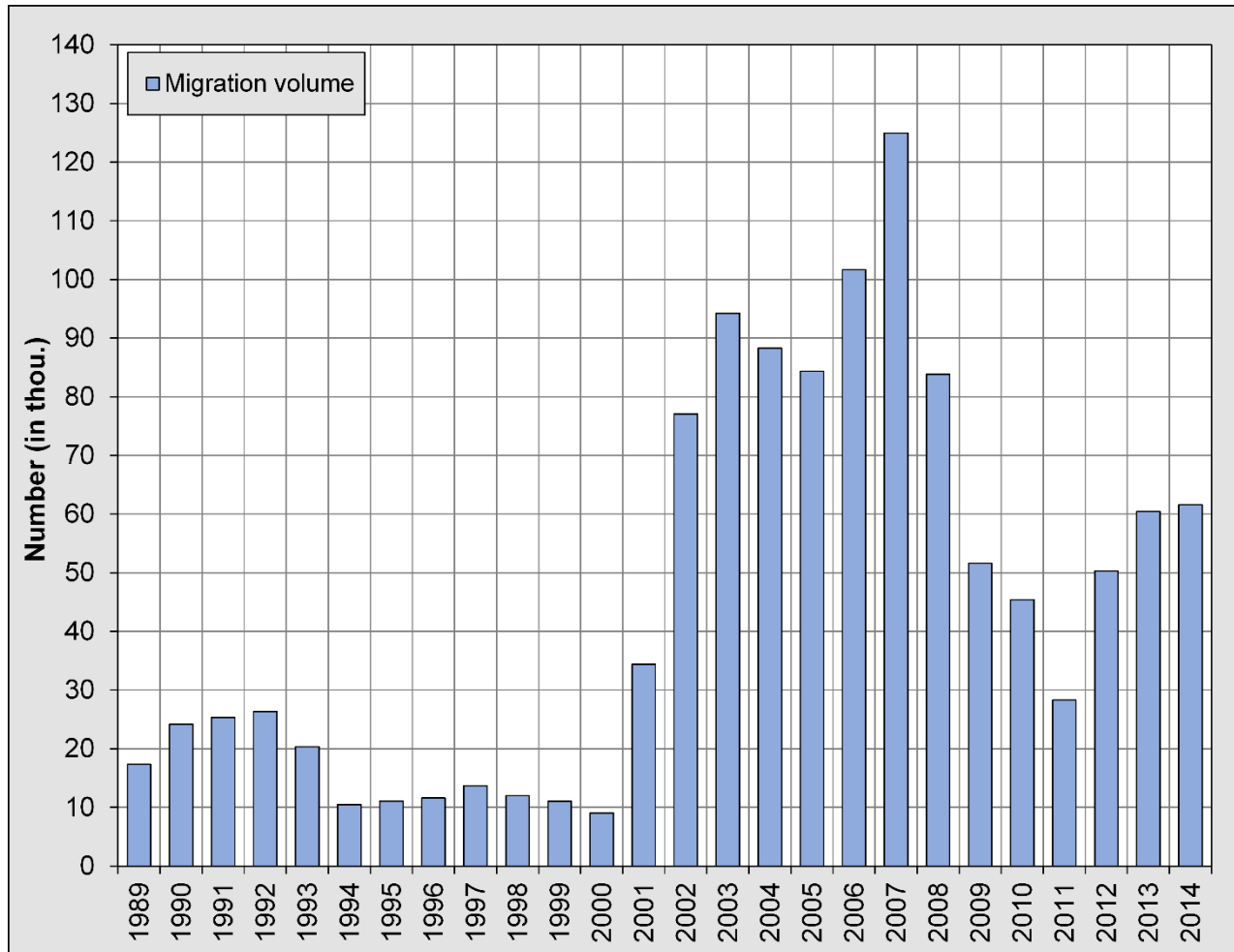
Source of data: Czech Statistical Office and own calculations

# Migration on the seesaw



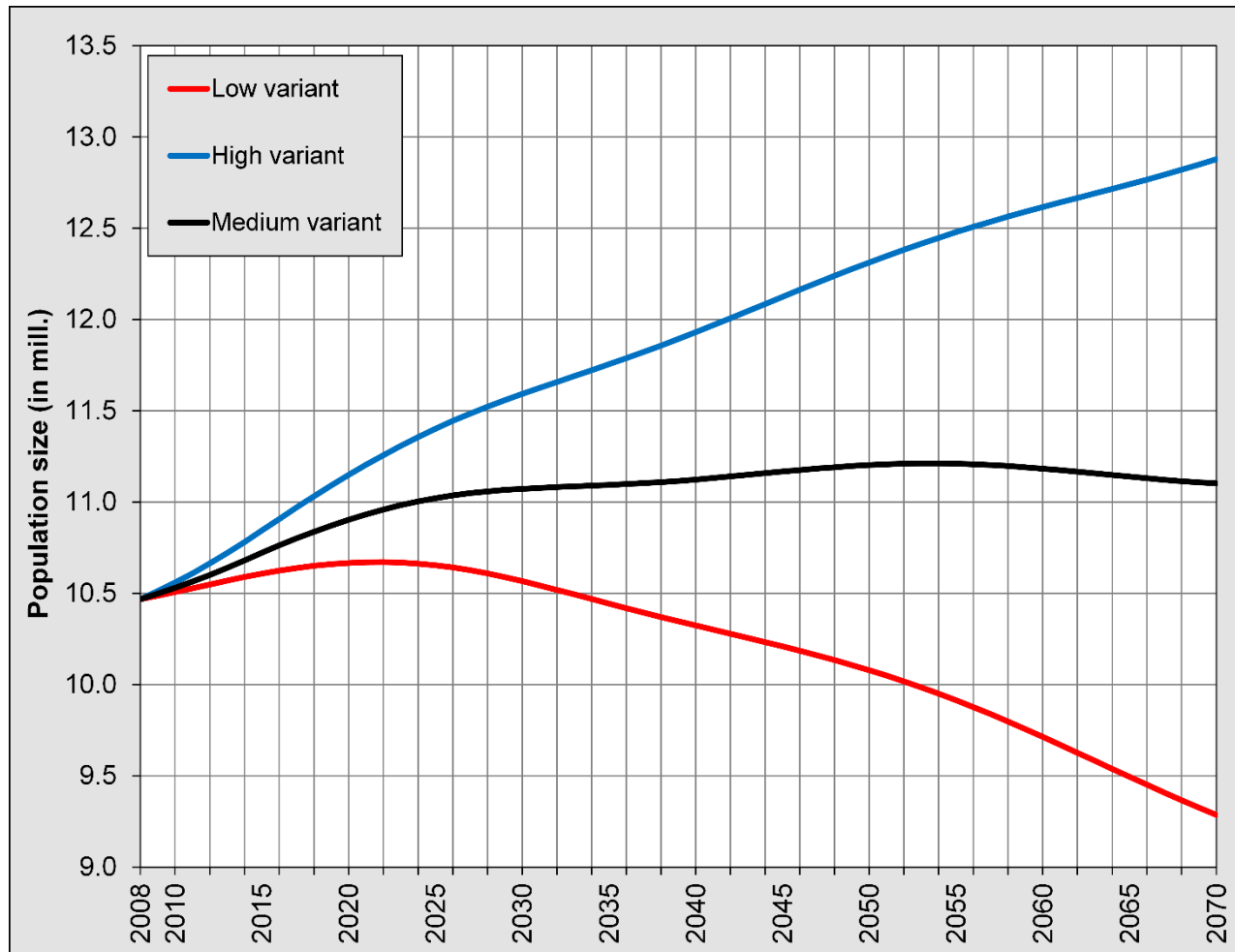
Source of data: Czech Statistical Office

# Migration on the seesaw

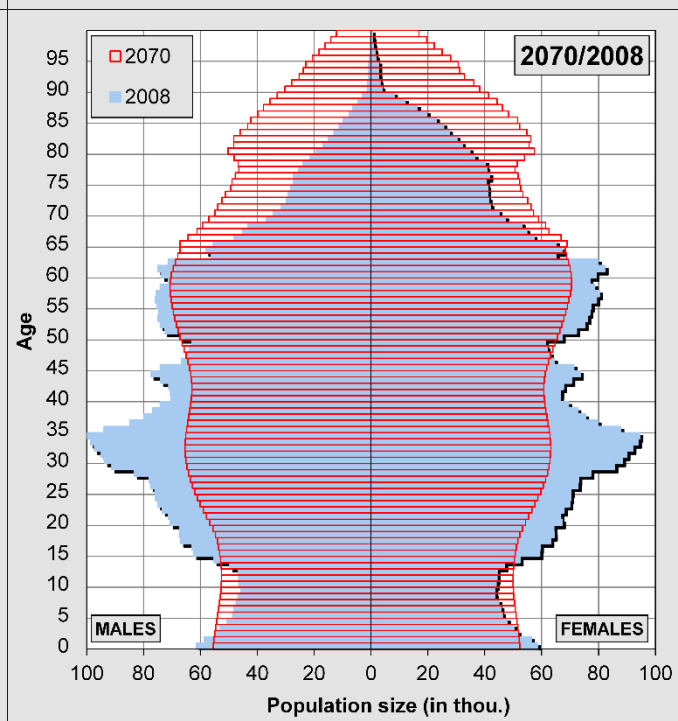
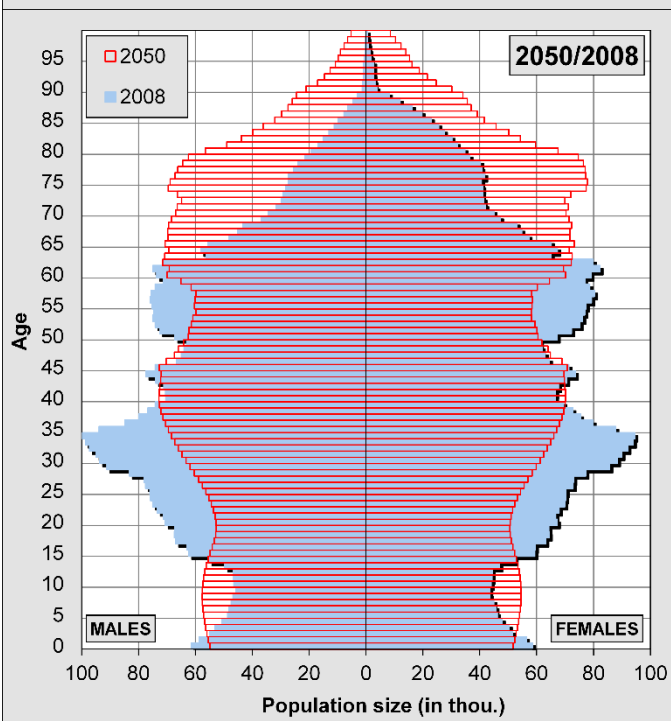
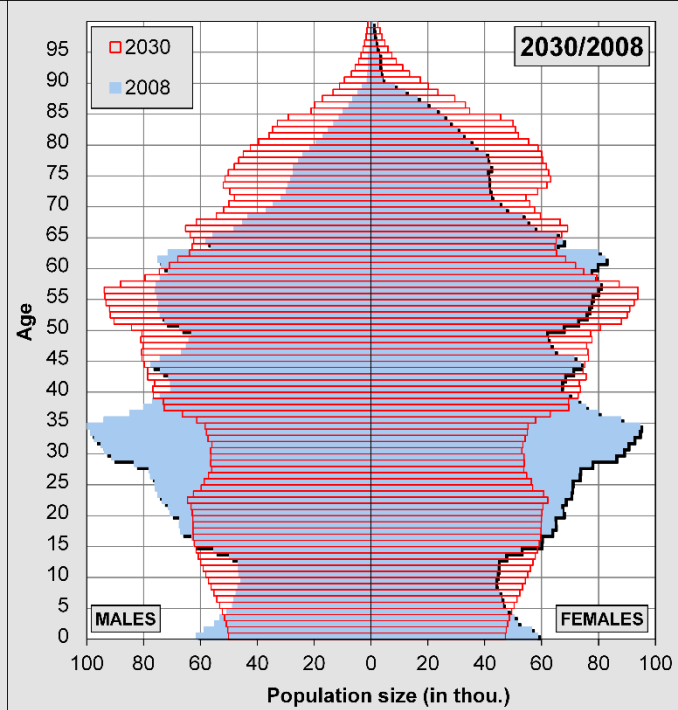
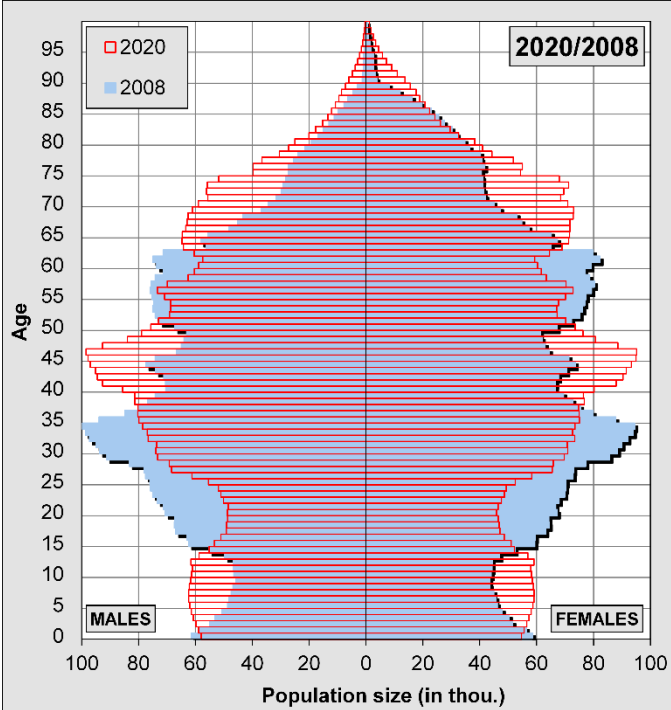


Source of data: Czech Statistical Office and own calculations

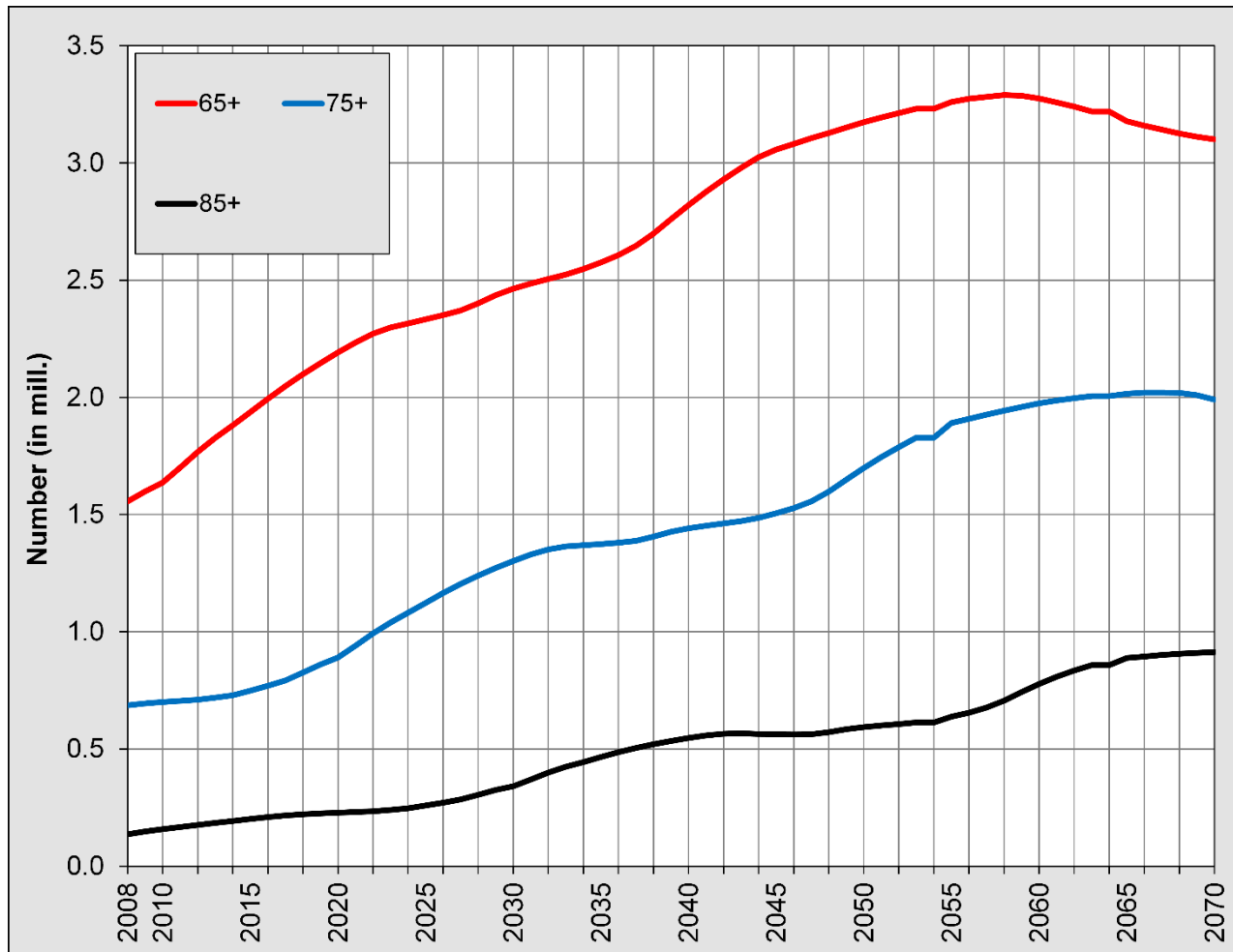
# Demographic perspectives – population size



Source of data: *Burcin and Kučera (2010)*



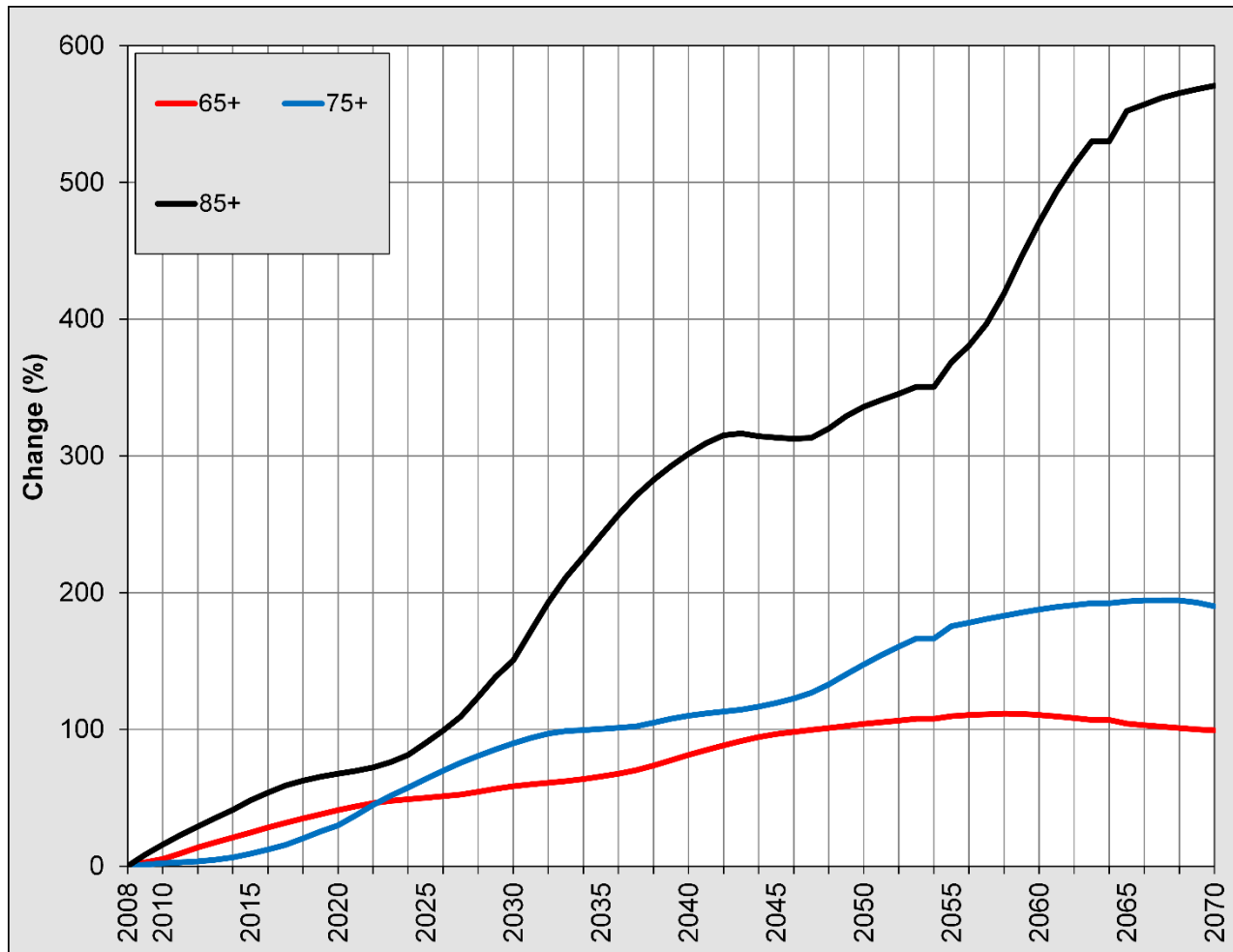
# Demographic perspectives – the elderly



Source of data: *Burcin and Kučera (2010)*



# Demographic perspectives – the elderly



Source of data: *Burcin and Kučera (2010)*

## **Population developments between 1989 and 2014:**

- **Uncertain, only „administrative“ population growth**
- **Dynamic ageing of population mainly determined by the initial age structure of population**
- **Profound changes in natural change**
- **Sweeping changes of migration determined by:**
  - **Economic and political developments in Eastern and South-Eastern Europe**
  - **Situation on the Czech Republic labour market**
  - **Introducing new definition of migrant in 2001**
  - **Irregular „cleaning“ of administrative registers**

## **Population developments after 2014:**

- **Deficit of natural change**
- **Migration gains of unknown volume**
- **Rather stagnation than any other development of population size**
- **Overall ageing of population, doubling population 65+ and rapid growth of the oldest-old (85+)**

# Thanksgiving and questions

**Thank you for your attention.**



**Please, do you have  
any questions?**

**We would be happy to answer.**